

*Creating* **STRONGER, HEALTHIER,  
MORE COMPASSIONATE  
COMMUNITIES**



**2019/20  
ANNUAL  
REPORT**



**United Way  
California Capital Region**

# UNITED WAY WAS MADE *for* TIMES SUCH AS THESE

*For nearly 100 years, United Way California Capital Region has faced the region's deepest and most urgent needs by bringing people together to build*  
**stronger, healthier and more compassionate communities.**



As we faced a pandemic, economic downturn, deep roots of racial inequality and poverty, the need for United Way's time-tested expertise in bringing people together was never greater.

Across Amador, El Dorado, Placer, Sacramento and Yolo counties United Way worked with community partners and individuals to make the Greater Sacramento region stronger, healthier and more compassionate.

# 2019/2020 *by the numbers*

## 62,338

**MEALS**

served at **21** school  
and community sites

## 75

**FAMILIES**

received case-  
management services

## 385

**STUDENTS**

improved reading skills  
through tutoring program

## 9,000

**FAMILIES**

earned **\$11.3 million** in refunds  
with the Free Tax Program

## 262

**COLLEGE SAVINGS ACCOUNTS**

opened

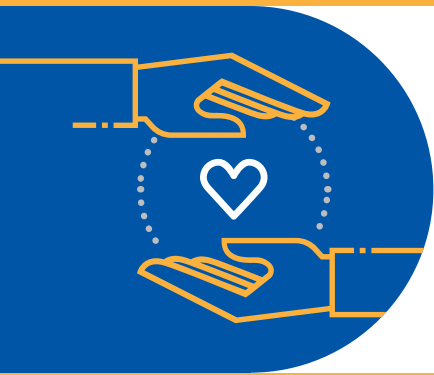
## 6,500

**BOOKS**

distributed to Woodland kids  
for summer reading



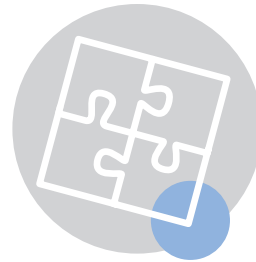
United Way  
California Capital Region



# COVID-19 LOCAL RELIEF FUND

*We partnered with nonprofit partners across our five-county region to identify low-income families whose lives were disrupted by the outbreak to ensure they received the help they needed.*

*We also partnered with **Donate4Sacramento** – all dollars donated to the Support Families area were distributed to Sacramento families through our fund.*



WE WORKED WITH  
**11** nonprofit partners  
who identified **LOCAL FAMILIES IN NEED**

## AMADOR

Amador Tuolumne Community Action Agency

## EL DORADO

3 Strands Global Foundation

## PLACER

Kids First  
Lighthouse Community Counseling

## SACRAMENTO

Birth and Beyond  
Black Child Legacy Campaign Neighborhood Centers  
International Rescue Committee  
Opening Doors

## YOLO

Empower Yolo  
RISE Inc.  
Yolo County Children's Alliance

WE RAISED MORE THAN

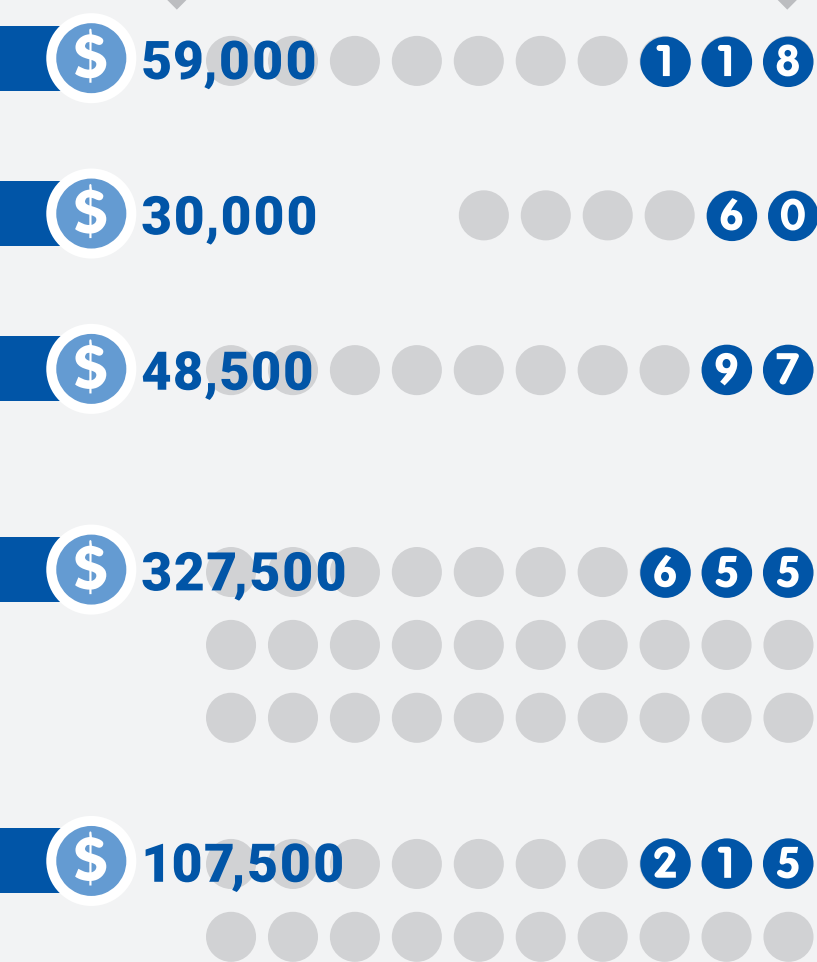
# \$572,000

in order to provide families with a one-time **\$500** distribution to help with rent, bills and basic needs.



DISPERSED PER COUNTY

FAMILIES HELPED PER COUNTY



TOTAL FAMILIES HELPED **1,145**

*"It's very meaningful to me to receive this funding because I can continue paying my bills and provide food and clothing for my children. When I learned that the funds come from people in the city, I was very grateful to see how they care about the community and that they are always willing to help others during hard times. Thank you United Way for making this possible."*

— **Nayely**



Most recipients used their funds for housing, utilities, food, and basic needs.



*And we did even more...*

# COMING TOGETHER *to* MAKE CHANGE HAPPEN

## UNITED WAY WOMEN UNITED®

PART OF A GLOBAL UNITED WAY  
NETWORK OF MORE THAN 75,000  
WOMEN TAKING ACTION AND  
IMPACTING CHANGE.

This group of dynamic women is dedicated to ensuring local foster youth are prepared for a successful transition to independence, especially as they faced the pandemic and high unemployment amidst more exposed racial inequality.

Through volunteer opportunities, donations and networking events, the **262 members** of our Women United group:

- + Raised **\$101,091** to support United Way's foster youth programs.
- + Supported **146 foster youth** with matched savings accounts for educational purposes and basic necessities when they leave foster care.
- + Held monthly **life skills workshops** to help foster youth manage personal finances, apply for scholarships, navigate the college system and prepare for interviews.



# YOUNG LEADERS SOCIETY

UNITING YOUNG PROFESSIONALS IN MAKING A DIFFERENCE IN OUR COMMUNITY.

More than ever, we needed the passion and energy of our community's young professionals to help create stronger, healthier, more compassionate communities in our region.

Through volunteer opportunities, donations and networking events, the **62 members** of our Young Leaders Society:

- + Raised more than **\$27,221** to support the Square One Project.
- + **Volunteered** monthly with various organizations lending their support to issues far and wide including Habitat for Humanity and Project Birthday.
- + Hosted Brews & Brains fundraisers that raised more than **\$18,000** in 2019 with more than **400 attendees**.



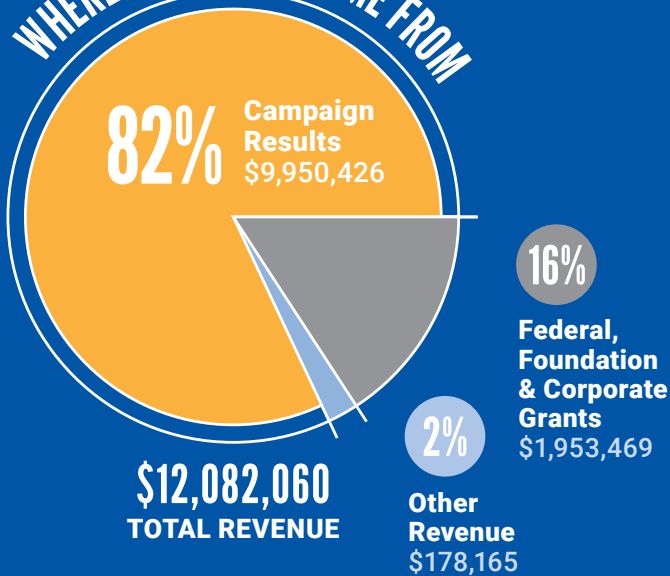
# VOLUNTEERS UNITED

Bringing people together is what we do best. We partnered with individuals, companies and more than **150 nonprofits** across the region to make a hands-on difference in our communities.

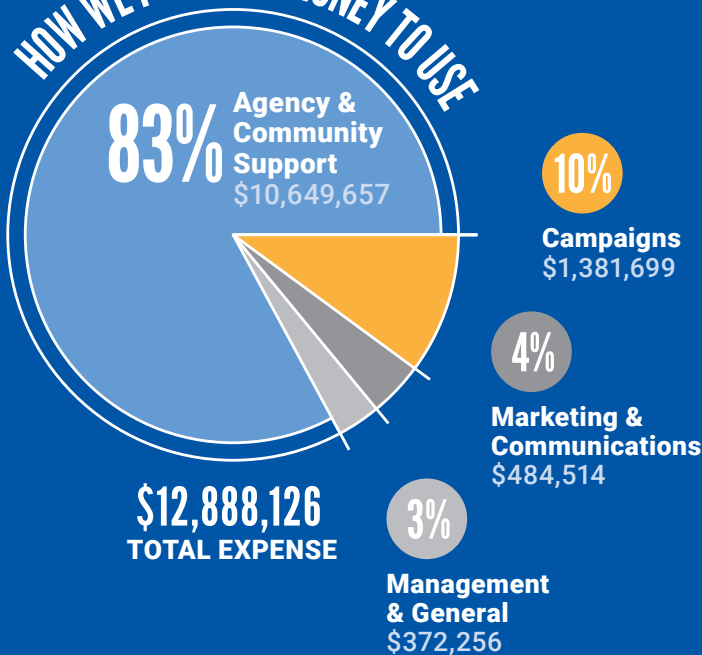
+ Volunteers donated **4,706 hours** to complete **24 projects**.



## WHERE OUR FUNDS COME FROM



## HOW WE PUT YOUR MONEY TO USE



# STATEMENTS OF ACTIVITIES

YEAR ENDED  
6.30.20

2020

ASSETS	
<b>CURRENT ASSETS</b>	
Cash & equivalents .....	\$1,589,809
Campaign pledges receivable .....	\$3,925,250
Current portion of grants receivable .....	\$402,422
Accounts receivable .....	\$59,274
Prepaid expenses and other assets .....	\$80,705
<b>TOTAL CURRENT ASSETS</b> .....	<b>\$6,057,480</b>

### NONCURRENT ASSETS

Property and equipment, net ..	\$103,185
Leasehold interest in property, net .....	\$1,726,817

**TOTAL NONCURRENT ASSETS** ..... **\$1,830,002**

**TOTAL ASSETS** .....

<b>TOTAL ASSETS</b> .....	<b>\$7,887,482</b>
<b>LIABILITIES</b>	
Designation distributions payable to agencies .....	\$4,084,282
Grant distributions payable to agencies .....	\$31,461
Accounts payable .....	\$104,957
Accrued expenses and other liabilities .....	\$695,553
<b>TOTAL LIABILITIES</b> .....	<b>\$4,916,253</b>
<b>NET ASSETS</b> .....	<b>\$2,971,229</b>
<b>TOTAL LIABILITIES &amp; NET ASSETS</b> .....	<b>\$7,887,482</b>

*This report is based on the best available data at time of printing.*

10389 Old Placerville Road • Sacramento, CA 95827

phone (916) 368-3000 fax (916) 368-3029

YourLocalUnitedWay.org    unitedwayccr



United Way  
California Capital Region