



### Objective

The student will blend onsets and rimes to make words.

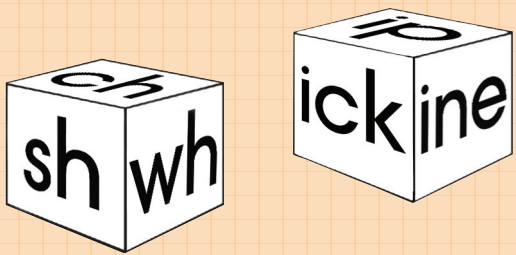
### Materials

- ▶ Onset cube (Activity Master P.003.AM1)  
*Labeled with the digraphs: ch, sh, th, wh, th, ch.*
- ▶ Rime cube (Activity Master P.003.AM2)  
*Labeled with the rimes: at, op, in, ip, ine, ick.*
- ▶ Student sheet (Activity Master P.003.SS)
- ▶ Pencils

### Activity

Students make words using digraph onset and rime letter cubes.

1. Place the cubes on a flat surface. Provide each student with a student sheet.
2. Taking turns, students roll each cube. Arrange cubes so the onset (digraph) cube is placed to the left of the rime cube.
3. Blend the onset and rime, and say the word (e.g., /ch/ /ip/, “chip”).
4. Write the word (nonsense or real) under the appropriate onset column. Underline the real words and put an “X” through the nonsense words.
5. Continue the activity until all possible words are made.
6. Point to and read the real words in each column.
7. Teacher evaluation



"chip"

Name \_\_\_\_\_

Digraph Roll-A-Word P.003.SS

ch	sh	wh	th
<u>chip</u>			<del>thop</del>

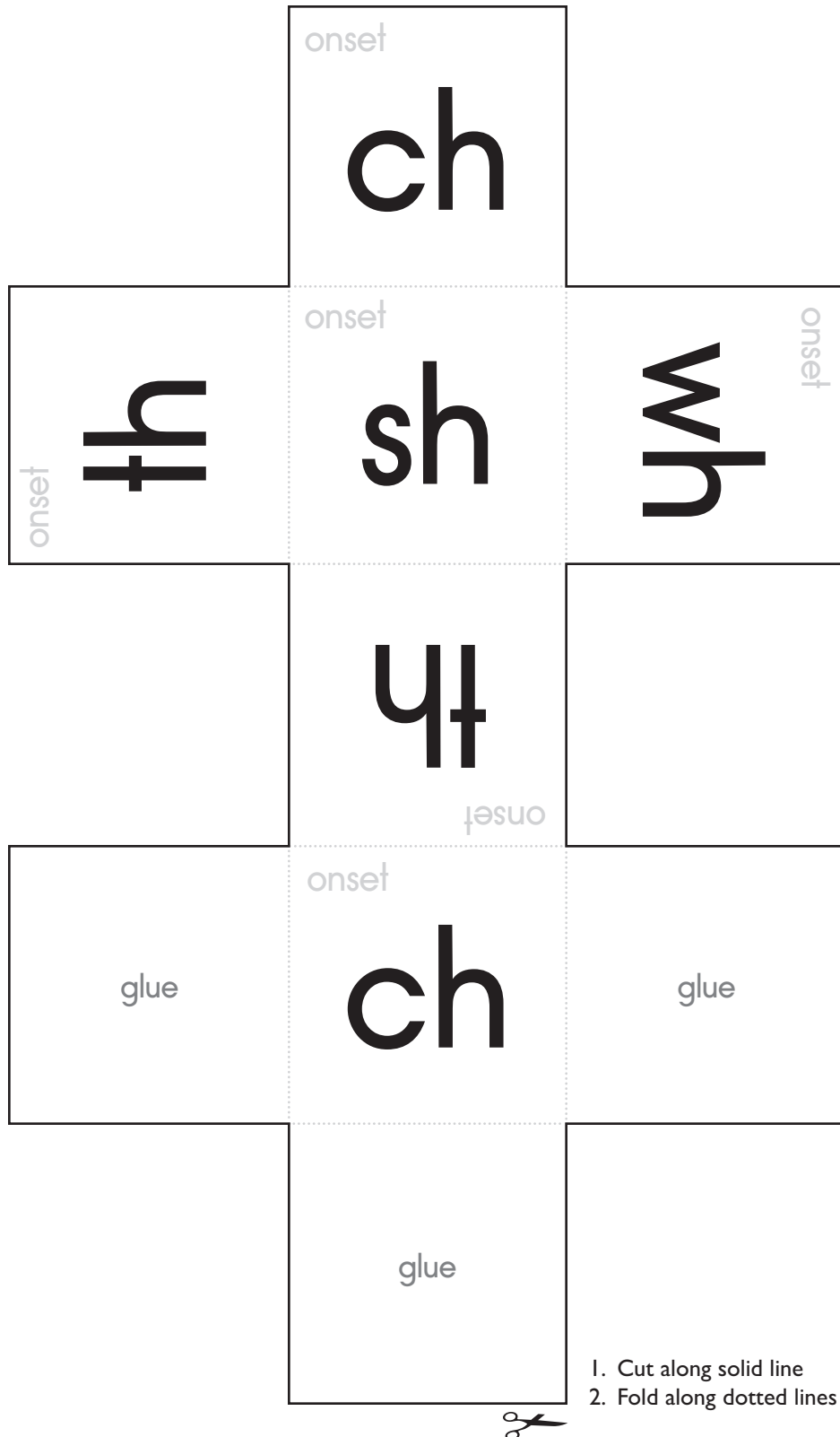
### Extensions and Adaptations

- ▶ Make other cubes with blends to make words (Activity Master P.003.AM3a - P.003.AM3b).

# Phonics

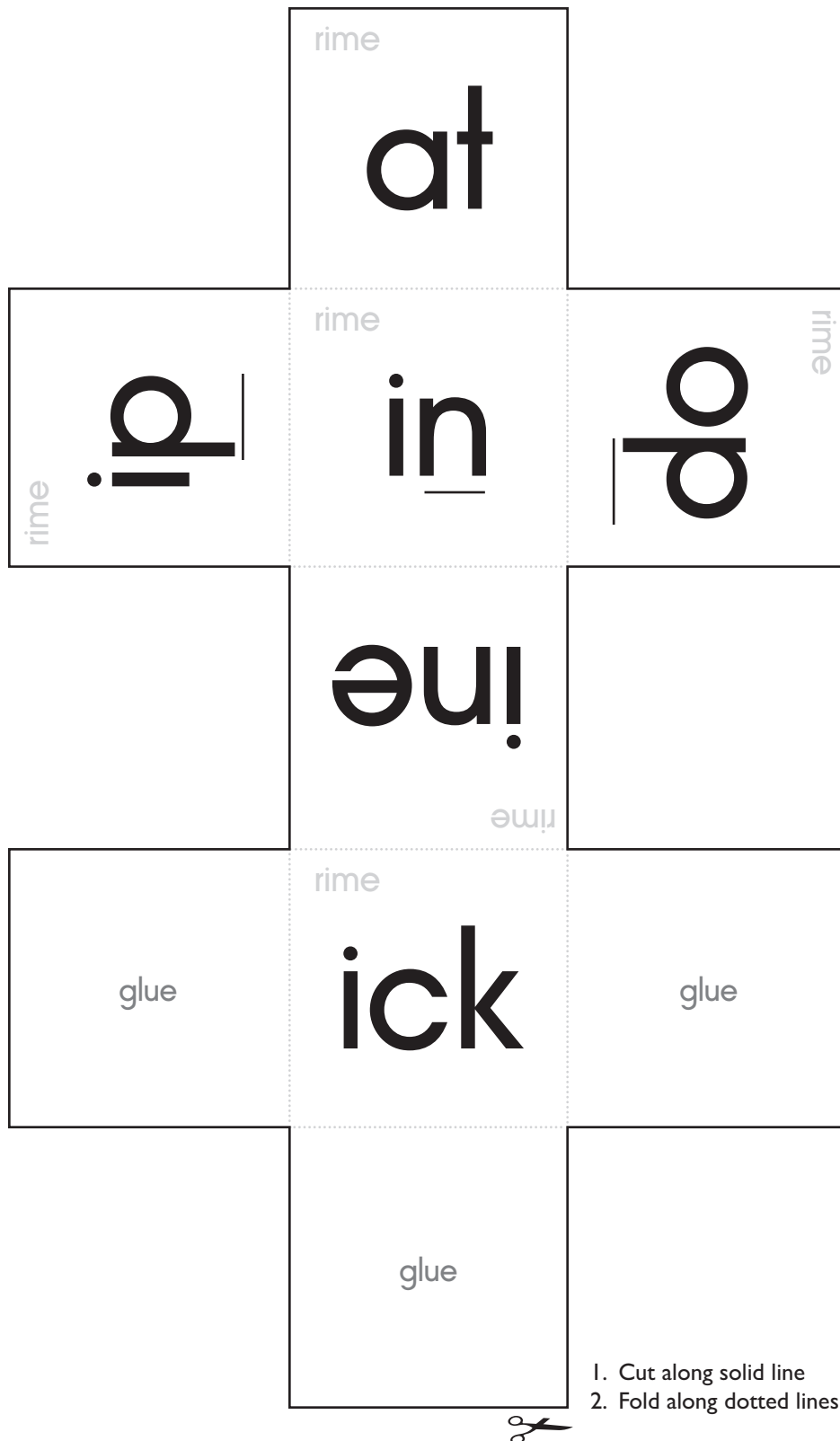
Digraph Roll-A-Word

P.003.AMI



1. Cut along solid line
2. Fold along dotted lines

onset cube



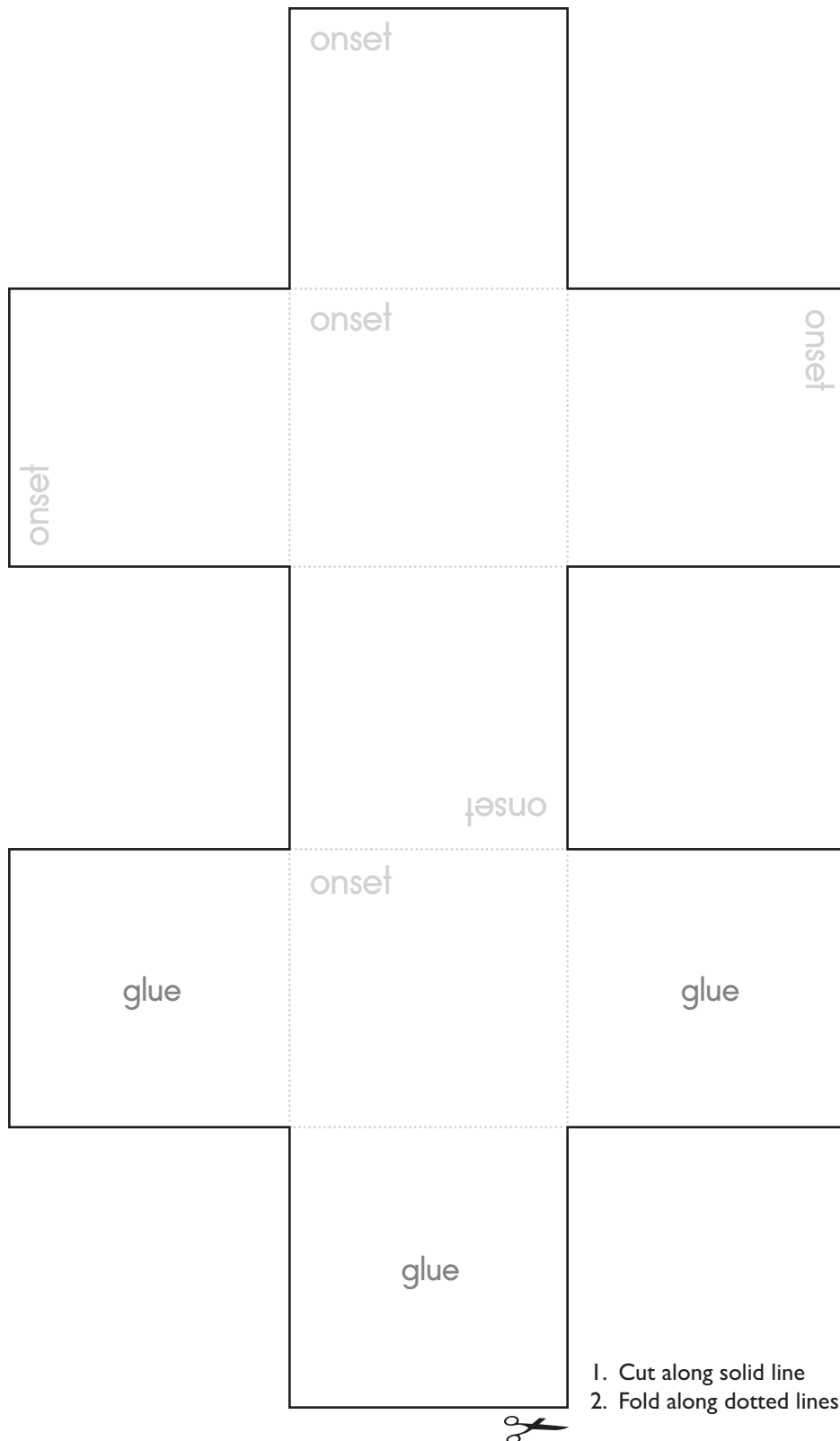
1. Cut along solid line
2. Fold along dotted lines

Name \_\_\_\_\_

Digraph Roll-A-Word

P.003.SS

ch	sh	wh	th



blank onset cube

# Phonics

## Digraph Roll-A-Word

P.003.AM3b



blank rime cube