



### Objective

The student will blend onsets and rimes to make words.



### Materials

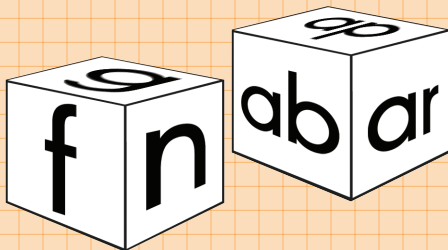
- ▶ Onset and rime cubes (Activity Master P.032.AM1)  
*Copy on card stock, laminate, cut, and assemble.*
- ▶ Student sheet (Activity Master P.032.SS)
- ▶ Pencils



### Activity

Students make words using onset and rime cubes.

1. Place cubes at the center. Provide each student with a student sheet.
2. Taking turns, students roll the onset and rime cubes.
3. Say the sound of the onset and rime, blend, and read the word orally (e.g., “/g/ap/, gap”).  
Record the onset, rime, and word in the appropriate columns.
4. Determine if the word is real or nonsense. If it is a nonsense word, cross it out.
5. Continue until five or more words are recorded.
6. Teacher evaluation



Name \_\_\_\_\_

P.032.SS Word Roll-A-Rama

Cubes		Word
onset	rime	
g	ap	gap
onset	rime	
onset	rime	
onset	rime	
onset	rime	
onset	rime	
onset	rime	

K-1 Student Center Activities: Phonics ©2005 The Florida Center for Reading Research (FCRR1032)



### Extensions and Adaptations

- ▶ Write words on cards and complete an open sort.
- ▶ Use other onset and rime cubes (Activity Master P.032.AM2).
- ▶ Make other onset and rime cubes (Activity Master P.032.AM3).



Name \_\_\_\_\_

P.032.SS

Word Roll-A-Rama

Cubes		Word
onset	rime	
onset	rime	
onset	rime	
onset	rime	
onset	rime	
onset	rime	

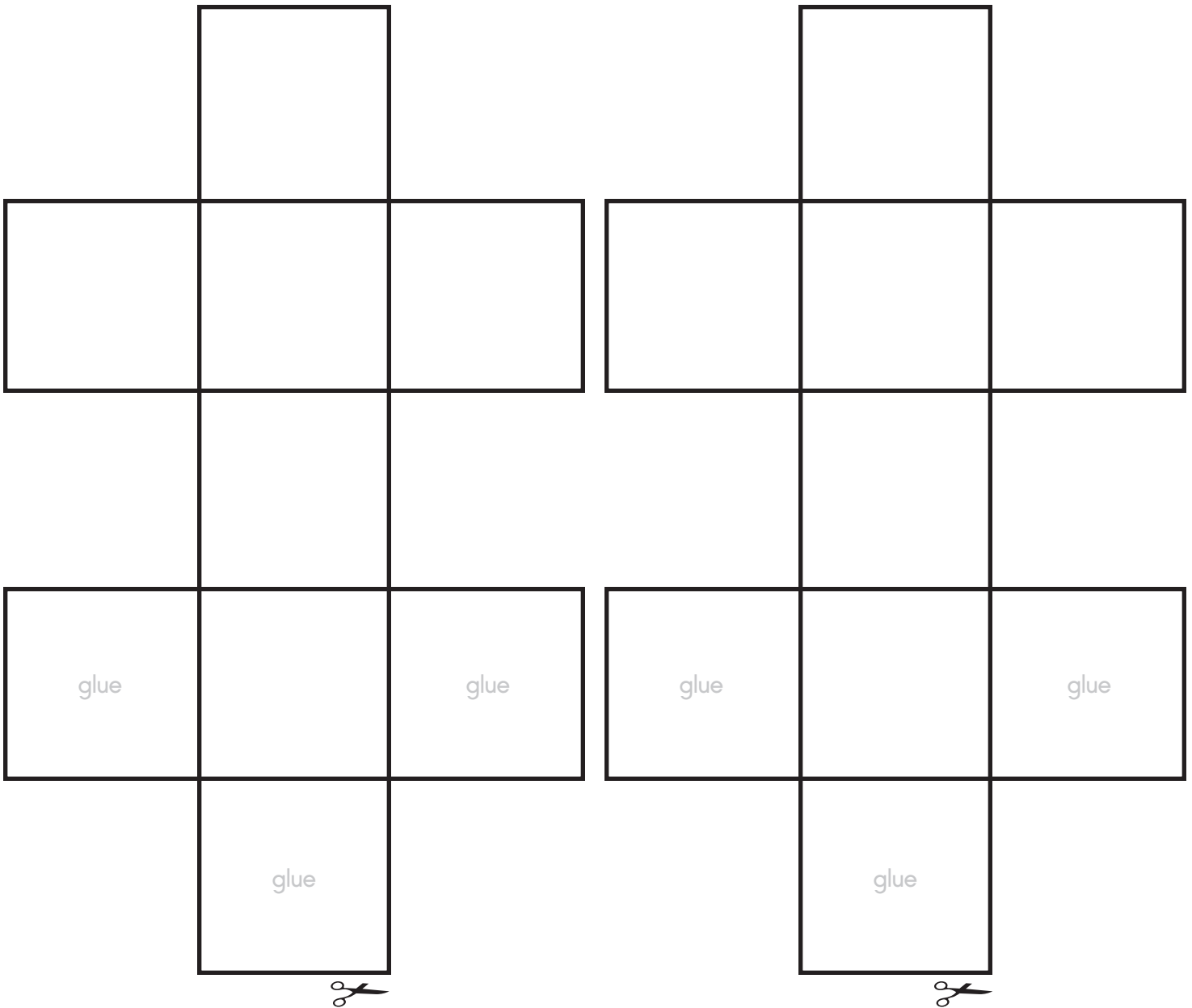
# Phonics

Word Roll-A-Rama

P.032.AM2

	1b <b>b</b>			2b <b>ed</b>	
1b <b>t</b>	1b <b>l</b>	1b <b>w</b>	2b <b>ear</b>	2b <b>end</b>	2b <b>et</b>
	<b>ds</b>			<b>est</b>	
	1b <b>r</b>			2b <b>ent</b>	
	glue			glue	
	glue			glue	

Scissors icons are located at the bottom of the 'glue' boxes in the second and fourth columns.



blank cubes